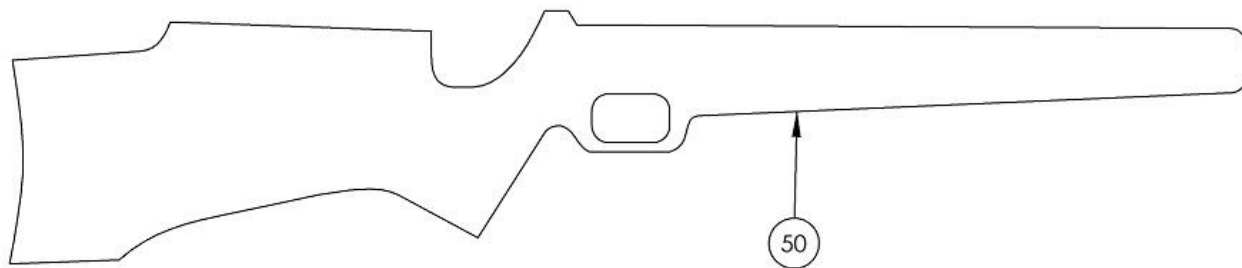
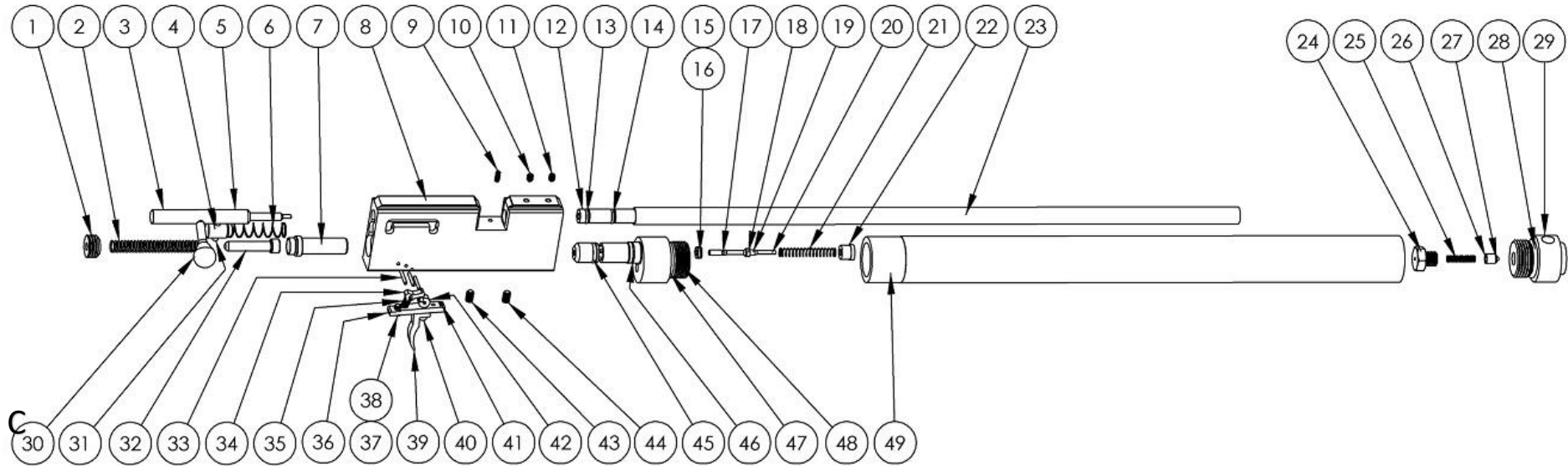


Model	Other model names	Date	Revision	Revision date
FX Typhoon and T12	Typhoon – Logun Solo, Tornado (JPN); F12- Tornado 5 (JPN)	2018-06-25	EN.20.01	2020-03-27



Model	Other model names	Date	Revision	Revision date
FX Typhoon and T12	Typhoon – Logun Solo, Tornado (JPN); F12- Tornado 5 (JPN)	2018-06-25	EN.20.01	2020-03-27

Partslist FX Typhoon

NO	ART. NR	DESCRIPTION	NO	ART. NO	DESCRIPTION
1 Lo	11030 < 16 Joule	Hammer spring Adjuster M16x1x2,5	23 - 5,5	12006	Barrel 5-14-485
1.1 Lo	16026 < 16 Joule	Washer 6,7x14	24	11017	Air tube end Inlet Nut
1 Hi	11541 > 16 Joule	Hammer spring adjuster	25	2524	Spring 0,4x3x20
2	16024	Hammer spring v3,v4	26	12011	Inlet valve
3	16007	Bolt attachment	27	5111	O-ring 2,5 x 1,5 NBR90
4	16005	Probe and hammer aligner	28	11624	O-ring 22 x 2,5 NBR70
5 - 4,5 Lo	16006-1 < 16 Joule	Pellet probe .177 Steel	29	11029	Air cylinder end inlet
5 - 4,5 Hi	16006 > 16 Joule	Pellet probe .177 Brass	30	16004	Cocking Bolt v3.v4
5 - 5,5	16008	Pellet probe .22 Steel	31	16003	Pin 4mm v3
5 – 5,5	16008-1	Pellet probe .22 Brass	32 Lo	16026 < 16 Joule	Washer 6,7x14
6	16025	Spring Return	32 Hi	11540 > 16 Joule	Hammer weight
7	11023	Hammer	33	16023	Cylindrical pin 2h6x16
8 - 4,5	16033	Barrel housing Tornado .177	34	11031	Trigger Sear
8 – 5,5	16011	Barrel housing Tornado .22	35	11504	Spring 0,32x3,2x14,4
8 – 4,5	16010-4,5	Barrelhousing Typhoon .177	36	11524	Trigger base
8-5,5	16010-5,5	Barrelhousing Typhoon .22	37	11015	Second stage trigger screw M5
9		Screw M3x20	38	2500	Grub screw M3x6
10	2637	Grub screw M4x6 flat	39	2020	Trigger blade
11	2637	Grub screw M4x6 flat	40	2527	Socket head cap screw M3x10
12 - 4,5	2057	Barrel Brass Inlet .177	41	2500	Grub screw M3x6
12 - 5,5	2056	Barrel Brass Inlet .22	42	11525	Trigger wheel
13	5112	O-ring 5,28 x 1,78 NBR70	43	11523	Countersunk screw M5x30 (synthetic stock)
14	5112	O-ring 5,28 x 1,78 NBR70	43	2526	Socket head cap screw M5x25 (for No synthetic stock)
15	2529	O-ring 4,3 x 1,5 NBR70	43	16044	Stock spacer (for No synthetic stock) <i>use with 2526</i>
16	7044	Valve seat Complete	44	2503	Cup point grub screw M5x8
17	2528	O-ring 1,5 x 1,0 NBR70	45	5104	O-ring 9,3 x 2,4
18	2040	Plastic Washer	46	16028	O-ring 12x1 NBR 70
19	2041	Holder Valve Seal	47	11624	O-ring 22 x 2,5 NBR 70
20	7034	Valve pin complete V1,3,6	48	16009	Main Valve Tube End
21	16030	Valve Spring	49	16017	390mm Air cylinder
22	16002	Valve spring lid V3	50	16014	Stock T12/Typhoon synthetic complete
23 - 4,5	12030	Barrel 4,5-14-485	50	0307	Stock Walnut v3

Model	Other model names	Date	Revision	Revision date
FX Typhoon and T12	Typhoon – Logun Solo, Tornado (JPN); F12- Tornado 5 (JPN)	2018-06-25	EN.20.01	2020-03-27

Partslist FX T12

NO	ART. NO	DESCRIPTION	NO	ART. NO	DESCRIPTION
1 Lo	11030 < 16 Joule	Hammer spring Adjuster M16x1x2,5	24	11017	Air tube end Inlet Nut
1.1 Lo	16026 < 16 Joule	Washer 6,7x14	25	2524	Spring 0,4x3x20
1 Hi	11541 > 16 Joule	Hammer spring adjuster	26	12011	Inlet Valve
2	16024	Hammer spring v3,v4	27	5111	O-ring 2,5 x 1,5 NBR90
3	16007	Bolt attachment	28	11624	O-ring 22 x 2,5 NBR70
4	16005	Probe and hammer aligner	29	11029	Air cylinder end inlet
5 - 4,5 Lo	16006-1 < 16 Joule	Pellet probe .177 Steel	30	16004	Cocking Bolt v3.v4
5 - 4,5 Hi	16006 > 16 Joule	Pellet probe .177 Brass	31	16003	Pin 4mm v3
5 - 5,5	16008	Pellet probe .22 Steel	32 Lo	16026 < 16 Joule	Washer 6,7x14
5 – 5,5	16008-1	Pellet probe .22 Brass	32 Hi	11540 > 16 Joule	Hammer weight
6	16025	Spring Return	33	16023	Cylindrical pin 2h6x16
7	11023	Hammer	34	11031	Trigger Sear
8 - 4,5	16015-4,5	Barrelhousing T12, .177	35	11504	Spring 0,32x3,2x14,4
8 - 5,5	16015-5,5	Barrelhousing T12, .22	36	11524	Trigger base
9		Screw M3x20	37	11015	Second stage trigger screw M5
10	2637	Grub screw M4x6 flat	38	2500	Grub screw M3x6
11	2637	Grub screw M4x6 flat	39	2020	Trigger blade
12 - 4,5	2057	Barrel Brass Inlet .177	40	2527	Socket head cap screw M3x10
12 - 5,5	2056	Barrel Brass Inlet .22	41	2500	Grub screw M3x6
13	5112	O-ring 5,28 x 1,78 NBR70	42	11525	Trigger wheel
14	5112	O-ring 5,28 x 1,78 NBR70	43	11523	Countersunk screw M5x30 (synthetic stock)
15	2529	O-ring 4,3 x 1,5 NBR70	43	2526	Socket head cap screw M5x25 (for No synthetic stock)
16	7044	Valve seat Complete	43	16044	Stock spacer (for No synthetic stock) <i>use with 2526</i>
17	2528	O-ring 1,5 x 1,0 NBR70	44	2503	Cup point grub screw M5x8
18	2040	Plastic Washer	45	5104	O-ring 9,3 x 2,4
19	2041	Holder Valve Seal	46	16028	O-ring 12x1 NBR 70
20	7034	Valve pin complete V1,3,6	47	11624	O-ring 22 x 2,5 NBR 70
21	16030	Valve Spring	48	16009	Main Valve Tube End
22	16002	Valve spring lid V3	49	16017	390mm Air cylinder
23 - 4,5	12030	Barrel 4,5-14-485	50	16014	Stock T12/Typhoon synthetic complete
23 - 5,5	12006	Barrel 5-14-485	50	0307	Stock Walnut v3