

DIA. NO. PART

- 1 Regulator Body
- 2 Belleville Spring
- 3 Piston w/ Seal
- 4 Valve Pin Spring
- 5 Valve Pin
- 6 Valve Pin Seal
- 7 Bonnet Aluminum
- 8 O Ring- 015/90 Urethane
- 9 O-ring P10A/70 NBR
- 10 O-ring P5/70 NBR
- 11a Unified 5K Burst Disk

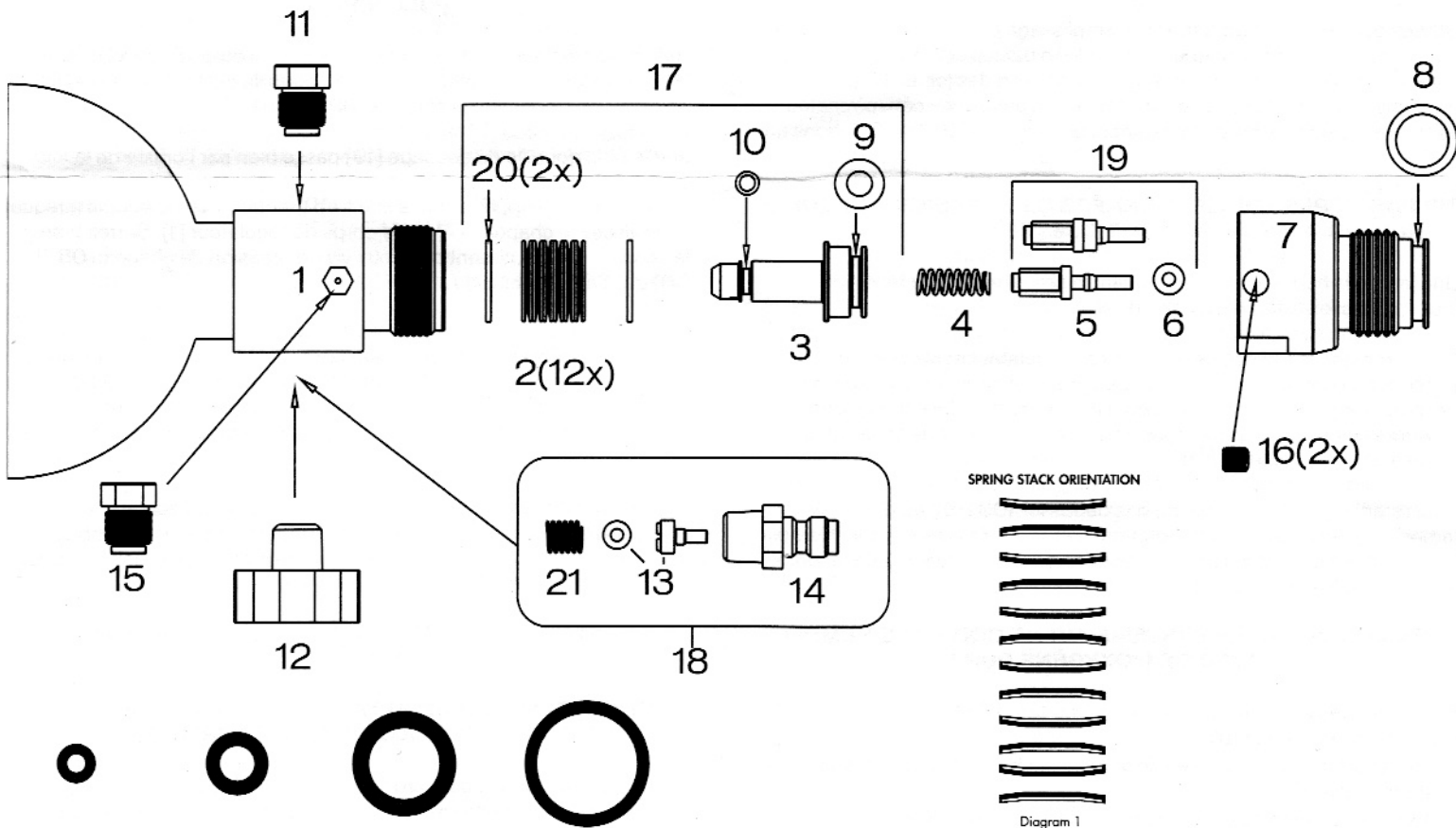
SKU

- 40969
- 40960
- 40970
- 40961
- 40967
- 40954
- 40968
- 41010
- 40957
- 40952
- 41029

12 HPA Gauge 5000 PSI

- 13 QD Pin Assembly w/ oring
- 14 Male Quick Dissconnect
- 15 Unified 1.8K Burst Disk
- 16 Bonnet Screw
- 17 Piston Assembly
- 18 Male Quick Disconnect Assembly
- 19 Valve Pin Assembly
- 20 Stack Washer
- 21 Quick Disconnect Spring
- N/A Rebuild Kit (17,4, 19, 8,16)

- 40956
- 40971
- 40962
- 41019
- 40958
- 40972
- 40973
- 40974
- 40959
- 40955
- 40975



S3/70 BUNA [13] P5/70 BUNA[10] P10A/70 BUNA [9] 015-90 - [8]

Diagram 1