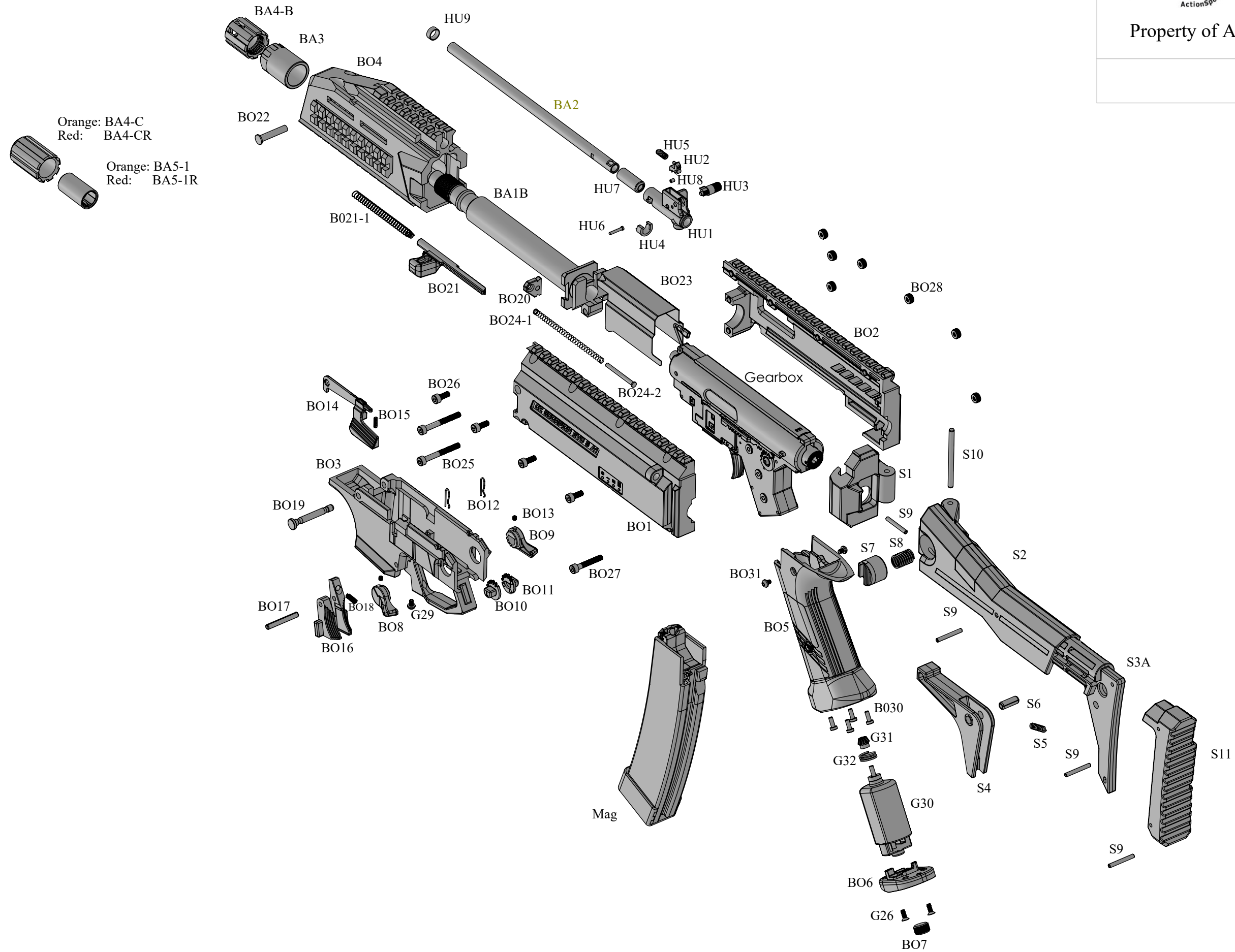
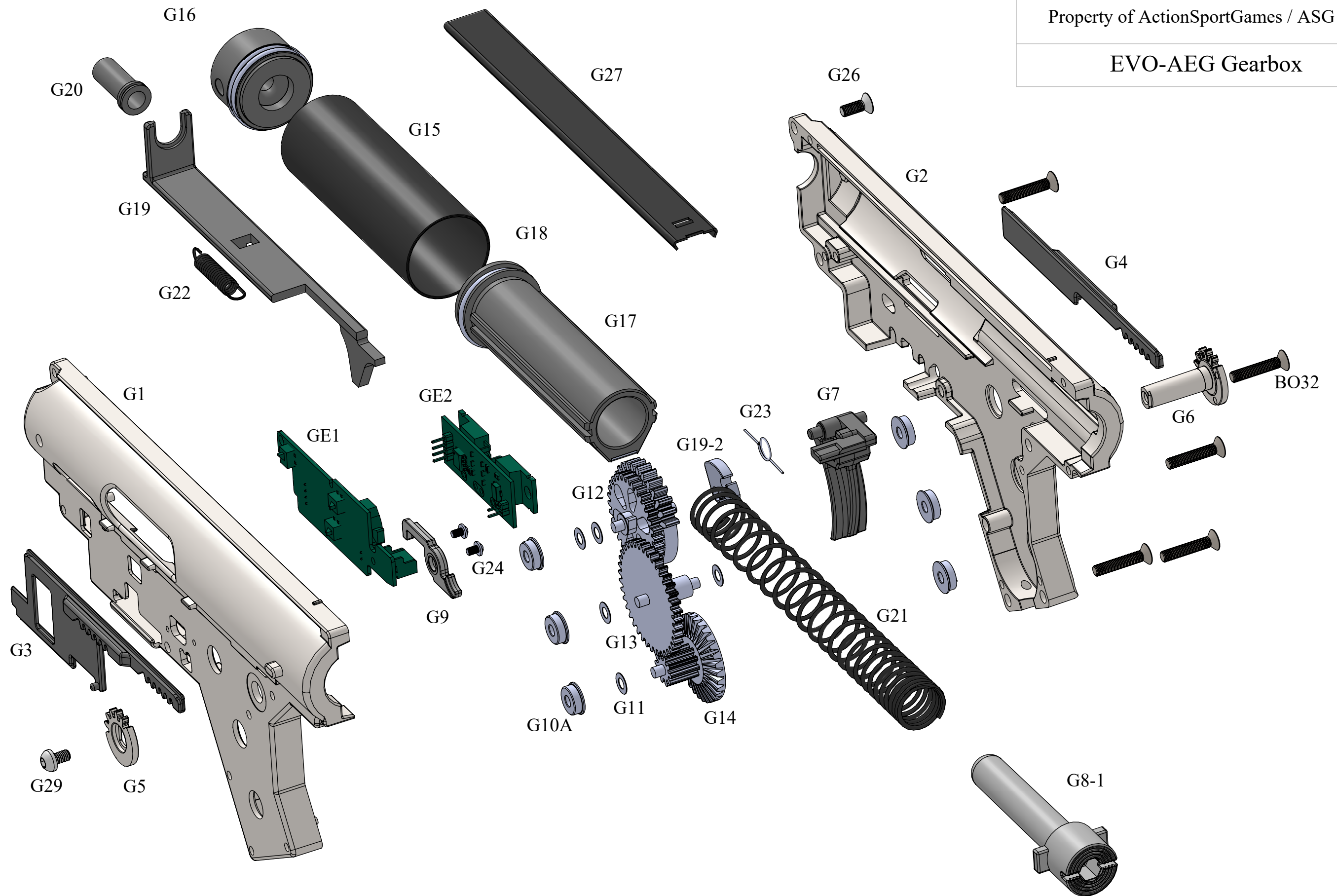


EVO-A1 AEG



EVO-AEG Gearbox



Drawing no.	order no.	Description	*
BA1B	17739	Outer Barrel	
BA2	17740	Inner Barrel - 208mm	*
BA2-1	18729	Carbine Inner Barrel - 407mm	
BA3	17741	Barrel Nut	
BA4B	17742	Flash Hider	
BA4-C	17805	Orange Flashider	
BA4-CR	17807	Red Flashider	
BA5-1	17806	Orange Barrel Tip	
BA5-1R	17808	Red Barrel Tip	
BA5-2	17809	Barrel Tip Pin 2x4 mm	
BET01	18740	Carbine - BET outerbarrel	
BO1	17752	Upper Receiver - L	
BO10	17761	Selector Gear - L	
BO11	17762	Selector Gear - R	
BO12	17763	Selector Spring	
BO13	17764	Bolt M3x4 DIN916	
BO14	17765	Bolt Catch Lever	
BO15	17747	Hop-UP Push-Spring	
BO16	17766	Mag Release	
BO17	17767	Mag Release Pin 3,5X30	
BO18	17768	Mag Release Spring	
BO19	17769	Disassembly Pin	
BO2	17753	Upper Receiver - R	
BO20	17976	Sling hook, Scorpion EVO 3 - A1	
BO21	17771	Charging Handle	
BO21-1	17772	Charging H-Spring	
BO22	17773	Charging handle pin	
BO23	17774	Dummy Bolt	
BO24-1	17775	Dummy bolt spring	
BO24-2	17776	Dummy spring guide	
BO25	17777	Bolt M4x35 DIN912	
BO26	17778	Bolt M4x12 DIN912	
BO27	17779	Bolt M4x25 DIN912	
BO28	17780	Nut M4x4	
BO29	17734	Bolt M3x5 ISO7380-1	
BO3	17754	Lower Receiver	
BO30	17781	Bolt M3x6 ISO7380-1	
BO31	17781	Bolt M3x6 ISO7380-1	
BO32	17731	Bolt M3x8 DIN7991	
BO4	17755	Hand Guard - front set	
BO4-1	18551	EVO S1 Carbine Front Black	
BO5	17756	Grip	
BO6	17757	Grip Cap	
BO7	17758	Motor Adjusting Bolt	
BO8	17759	Selector Lever - L	
BO9	17760	Selector Lever - R	
EC01	18731	Cabine Flash hider	
EC02	18730	Cabine - A1 Outerbarrel	
EC03	18888	Cabine - A1 Barrel O-ring	

G1	18544	Gearboks Shell - Left	
G10-A	17714	Oilless Bushing 8 mm	*
G11	17715	Shims 3x6x0,5 mm	*
G11	18048	Shims 3x6x0,3 mm	*
G12	17716	Gear - Sector	*
G13	17717	Gear - Spur	*
G14	17718	Gear - Bevel	*
G19	17723	Tappet Plate V3	
G2	18545	Gearbox shell - Right	
G20	17724	Nozzle	
G21	17725	Main spring M95	*
G21-1	17726	Main Spring M120	*
G21-3	18773	Main spring M95 - Carbine	
G22	17727	Tappet Spring	
G23	17728	Trigger Spring	
G24	17729	Bolt M2x3 Din967H	
G25	17730	Bolt M3x16 DIN7991	
G26	17731	Bolt M3x8 DIN7991	
G27	17732	Gearbox Plate	
G29	17734	Bolt M3x5 ISO7380-1	
G3	17706	Selector Plate - L	
G30	17819	Motor "U-Basic" - short axle	
G4	17707	Selector Plate - R	
G5	17708	Transfer gear - L	
G6	17709	Transfer gear - R	
G7	17710	Trigger	
G8	18576	Spring guide - Standard Steel Version	
G9	17713	Cut-Off Lever	
GCA	17813	Cylinder/piston unit - complete	*
GE1	17736	EC Unit - AEG	
GE2	17737	FET unit - AEG	
HU1	17743	Hop-Up Chamber	
HU2	17744	Hop-UP Lever	
HU3	17745	hop-UP Roler	
HU4	17746	Hop-UP C-Clip	
HU5	17747	Hop-UP Push-Spring	
HU6	17748	Hop-Up Pin	
HU7	17749	Hop-up Rubber	*
HU8	17750	Hop-Up Roll	*
HU9	17751	Hop-Up Ring	
M1	17792	Magazin Body - Black	
M10	17802	Magazine Spring Support	
M11	17803	Bottom Cap	
M12	17804	PIN 2x21	
M2	17793	Magazine Shell - L	
M3	17794	Magazine Shell - R	
M4-1	17795	Follower 1	
M4-2	17796	Follower 2	
M5	17797	Status Lever 1	
M6	17798	Status Lever 2	

M7	17799	BB Jaw	
M8	17800	Jaw Spring	
M9	17801	Magazine Spring	
S1	17782	Stock Base	
S10	17791	Pin 4x54	
S11	18327	Stock Shoulder	
S2	18323	Stock Body	
S3A	18324	Stock extender	
S4	18325	Stock Release Lever	
S5	17786	Stock Lock. Lever Spring	
S6	17787	Locking Button Pin 6x16	
S7	18326	Stock Button	
S8	17789	Locking Button Spring	
S9	17790	PIN 3x24	